

 #AMCPoncology

**AMCP** | Academy of  
Managed Care  
Pharmacy®

**DRIVING VALUE  
AND OUTCOMES in**

**2017**  
**ncology**  
AMCP PARTNERSHIP FORUM

NOVEMBER 14-15, 2017 • THE WESTIN CRYSTAL CITY • ARLINGTON, VA

HOSTED BY THE ACADEMY OF MANAGED CARE PHARMACY IN PARTNERSHIP WITH

abbvie

**AMGEN**®

AstraZeneca 

 **FOUNDATION**  
MEDICINE®

**Genentech**  
*A Member of the Roche Group*

 **GILEAD**

*Lilly*

 **MERCK**  
INVENTING FOR LIFE

  
**SANOFI**

  
**ONCOLOGY**

 **Xcenda**®  
AmerisourceBergen





**SUSAN A. CANTRELL, RPh, CAE**  
*AMCP Chief Executive Officer*

Welcome to the Academy of Managed Care Pharmacy's Partnership Forum "Driving Value and Outcomes in Oncology." This is AMCP's second forum on the topic and builds on results of last year's event, as well as recent research on gaps in measuring outcomes in oncology care and new cancer medicines.

As we all know, biopharmaceutical innovation is offering new hope for treatments and cures that were inconceivable only a few short years ago. The oncology pipeline, in particular, is vast with many new promising options coming to market each year.

To best optimize this wave of innovation, AMCP is leading an effort to recognize and reward "value" in cancer care. Recognizing and rewarding value, in fact, is the new mantra throughout health care. Determining how to provide the best value for the many oncology products on the market requires new processes, procedures and metrics. Development of metrics and methodologies that drive value with the least financial and resource burden is the task before us.

Over the next day and a half, we will look for specific improvements in oncology quality measures, which will help stakeholders identify therapies and medication management protocols that hold the greatest value and potential to improve patient outcomes. This work also will help us develop actionable ideas to address patient financial burden.

I am proud of the work that AMCP has done on value. Recent initiatives include forums and education sessions on the New Era of Precision Medicine in Oncology; The Promise of Big Data in Improving Cancer Care; a Partnership Forum on Value Based Contracting; and an upcoming Partnership Forum on Precision Medicine.

Furthermore, improving outcomes and value is very much on the minds of AMCP's approximately 8,000 members, who design and implement pharmacy benefits for more than 270 million Americans. Our members have identified the need to improve value in oncology as among the top issues they face. On behalf of our membership, I would like to thank your efforts here today.

I also would like to extend a warm thank you to our sponsors who made this event possible: AbbVie, Amgen, AstraZeneca, Foundation Medicine, Genentech, Gilead, Eli Lilly and Company, Merck, Sanofi, Takeda Oncology, and Xcenda. I look forward to a very productive forum.

Sincerely,

A handwritten signature in black ink, appearing to read "Susan Cantrell", is positioned above the printed name and title.

Susan A. Cantrell, RPh, CAE  
AMCP Chief Executive Officer

# AGENDA

## TUESDAY, NOVEMBER 14, 2017

---

Welcome & Introductions

Presentation – *Current Global Oncology Trends*

Panel Discussion – *Interventions to Reduce the Risk of Cancer Treatment-Related Financial Burden on Patients*

Breakout Session – *Reducing Cancer Care Financial Burden: Disease, Market Factors, Process and System Improvements*

Panel Discussion – *Oncology Care Outcomes and Measures: A Stakeholder Perspective on Challenges and Opportunities*

Breakout Session – *Current Quality Metrics and Gaps with Pharmaceuticals*

Close & Reception

## WEDNESDAY, NOVEMBER 15, 2017

---

Welcome

Panel Discussion – *Special Considerations in Cancer Care Measurements and Quality Improvement*

Breakout Session – *Current Value Measurements and Gaps with Oncology Pharmaceuticals*

Close

# MODERATOR



## **SUSAN C. WINCKLER, RPh, ESQ.**

*Chief Risk Management Officer  
Leavitt Partners, LLC*

Susan C. Winckler is the Chief Risk Management Officer, as well as a lead contributor in the firm's alliance management and regulatory consulting activities, for Leavitt Partners (LP), a health care intelligence firm. Founded by former HHS Secretary and EPA Administrator Michael O. Leavitt, LP advises senior executive teams about health care developments such as health insurance exchanges, Medicaid expansion, the conversion of fee-for-service payment to value-based payment, and helps clients navigate federal policy makers such as the Food and Drug Administration and the Centers for Medicare and Medicaid Services.

From October 2014 to October 2015, she served as LP's lead staff member and the interim executive director for the Health Care Transformation Task Force, an alliance of patients, payers, providers and purchasers committed to moving 75% of their businesses to value-based payment by 2020. From late 2009 to mid-2014, Winckler simultaneously served as a Senior Advisor with LP and as the President and Chief Executive Officer of the Food and Drug Law Institute (FDLI), a nonprofit 501(c)(3) organization committed to providing a marketplace for discussing global food and drug law issues through conferences, publications and member interaction. From January 2007 to June 2009, she served as the Chief of the Staff for the Food and Drug Administration within HHS. In that capacity, she provided integrated policy analysis and strategic consultation to the Commissioner and senior officials on significant agency issues and programs. Winckler also led the operations of the Office of Legislation, Office of External Relations, Office of Public Affairs, and Office of the Executive Secretariat.

Prior to joining FDA, Winckler was the Vice President for Policy and Communications and Staff Counsel for the American Pharmacists Association (APhA). As pharmacist and attorney by training, Winckler served as the primary spokesperson for APhA during media interviews, and was APhA's senior lobbyist. Previous positions with the Association include Group Director, Policy and Advocacy; Director, Policy and Legislation; Director, Practice Affairs, and Manager, Special Projects. Prior to joining APhA, Winckler directed the implementation of the Iowa Medicaid Drug Prior Authorization Program for the Unisys Company, and worked for the Iowa Pharmacists Association (now the Iowa Pharmacy Association) and a community pharmacy in Iowa.

She has been recognized as a Fellow of the American Pharmacists Association, a Distinguished Alumna of the University of Iowa College of Pharmacy, a Distinguished Young Alumna by the University of Iowa Foundation, a Woman of Distinction by Alpha Xi Delta Fraternity, and elected as a Distinguished Fellow in Public Policy to the National Academies of Practice, Pharmacy Academy. She delivered the William A. Zellmer Lecture for the American Society of Health-System Pharmacists and was elected a Trustee of the United States Pharmacopeial Convention (USP) for the 2015-2020 term. Winckler is a graduate of the University of Iowa College of Pharmacy and the Georgetown University Law Center, magna cum laude. She is licensed to practice pharmacy in Iowa and admitted to the bar in the Commonwealth of Virginia.



Pioneering science delivers vital medicines™

## *Transforming the language of life into vital medicines*

At Amgen, we believe that the answers to medicine's most pressing questions are written in the language of our DNA. As pioneers in biotechnology, we use our deep understanding of that language to create vital medicines that address the unmet needs of patients fighting serious illness – to dramatically improve their lives.

For more information about Amgen, our pioneering science and our vital medicines, visit [www.amgen.com](http://www.amgen.com).



# PARTICIPANTS

AS OF NOVEMBER 6, 2017



## **RACHEL ANHORN, PharmD**

*Director, Payer Policy and Health Outcomes  
Foundation Medicine*

Rachel Anhorn leads the development of US HEOR initiatives, and is focused on payer education about the unique clinical value of comprehensive genomic profiling. Her professional interests include helping shape health care policy to promote the value of oncology diagnostics and genomically-matched precision treatment to improve outcomes and cost effectiveness of cancer care for all stakeholders.



## **JIM BLANCHETTE, MBA**

*Director, US Market Access  
Takeda Oncology*

Jim is a Director, US Market Access, focused on reimbursement policy, value and access. He has been with Takeda Oncology for five years. Additionally, he has over twenty-two years of pharmaceutical industry experience, with roles at Pfizer as an R&D scientist and in technology licensing and business development along with Commercial roles spanning market access, trade channel strategy, marketing and sales. Jim earned his MBA and concentration in Pharmacoepidemiology and Pharmacoeconomics through the Schools of Business and Pharmacy at the University of Rhode Island and undergraduate degree in Chemistry at Providence College.



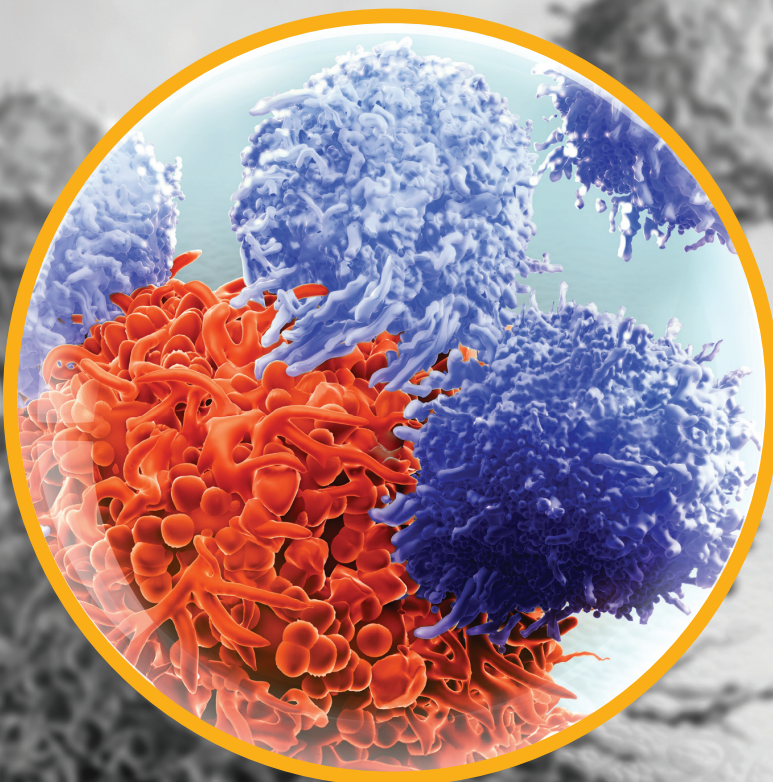
## **MARLO BLAZER, PharmD, BCOP**

*Associate Director  
Xcenda*

Marlo Blazer is an associate director with the Medical Communications team within Scientific Consulting at Xcenda, and is involved in providing clinical oncology insights for the organization's real-world evidence teams. In this role, she has helped in generating evidence on real-world use/effectiveness of oncology therapies through application of innovative methodologies, and disseminated the findings to relevant provider and decision-maker audiences, worldwide. She is also involved in oncology-related GHEOR activities, including content development of AMCP formulary dossiers, global value dossiers, formulary kits, training slide decks, and other scientific publications.

# REVEALING

## the Intricacies of Immuno-Oncology



Scanning electron micrograph of T cells attacking a cancer cell

Combination strategies are a key area of clinical research and may unlock the potential of immuno-oncology (IO) therapies by:

- Overcoming multiple mechanisms of immune evasion
- Targeting nonredundant pathways, such as CTLA-4 and PD-L1

AstraZeneca is committed to investigating a variety of IO-based combinations across a range of tumor types.

Visit [AZimmuno-oncology.com](http://AZimmuno-oncology.com) to learn more about the Immuno-Oncology program at AstraZeneca





# PARTICIPANTS

AS OF NOVEMBER 6, 2017



## REBECCA BORGERT, PharmD, BCOP

*Director, Clinical Oncology Product Development  
Magellan Rx Management*

Rebecca Borgert focuses on developing, implementing and coordinating comprehensive oncology products and solutions. She is responsible for monitoring the performance of existing products by evaluating the achievement of program goals for customers and analyzing clinically sound program enhancements. She is a board certified oncology pharmacist with clinical experience in pediatric oncology, adult ambulatory oncology, bone marrow transplantation and palliative care/hospice care.



## HAROLD CARTER, PharmD

*Sr. Director, Clinical Solutions  
Express Scripts*

Harold Carter leads strategic development and management of Express Scripts' utilization management initiatives. In his current role, he is responsible for the development and management of Express Scripts' Value Based Solutions and other strategic initiatives. He joined Express Scripts in 2011 as a clinical product manager, with responsibility for the development of new specialty utilization management programs.



## TIM CHIU, PharmD, BCPS

*Pharmacist Evidence Analyst & Strategist  
Kaiser Permanente*

Tim Chiu first joined Kaiser Permanente in 2010, and currently covers the areas of hematology/oncology and palliative care. His responsibilities include providing evidence reviews to clinicians, formulary management and drug pipeline analysis. Prior to his current role, he was an oncologist pharmacist at an oncology/infusion clinic in Kaiser Permanente Northern California.



# FOUNDATION MEDICINE<sup>®</sup>

Foundation Medicine is leading a transformation in cancer care, where each patient's treatment is informed by a deep understanding of the molecular changes that contribute to their disease. By providing comprehensive genomic profiles, a suite of support and technology services, and an expertise driven by a knowledge base of over 90,000 patients, we are able to help oncology care teams discover more treatment options for their patients.

See more at [foundationmedicine.com](https://foundationmedicine.com)



# PARTICIPANTS

AS OF NOVEMBER 6, 2017



## RENA M. CONTI, PhD

*Associate Professor  
University of Chicago*

Rena M. Conti is associate professor in the University of Chicago's departments of pediatrics and public health sciences. Her research applies economic methods to analyze the incentives driving prescription drug development, adoption and price. Her focus has been primarily on "specialty" drugs, particularly cancer, because this area is at the epicenter of the key policy conundrum: the tradeoff between providing incentives for innovative activity versus ensuring access and affordability. Rena is a 2007 graduate of Harvard University's Interfaculty Initiative in Health Policy, concentration: economics.



## GWEN DARIEN

*Executive Vice President for Patient Advocacy  
Patient Advocate Foundation (PAF) & Nation  
Patient Advocate Foundation (NPAF)*

Gwen Darien leads programs that link PAF's patient service programs to NPAF's advocacy and policy initiatives to improve access and affordability to quality health care. Previously, she was executive vice president of programs and services at the Cancer Support Community. Gwen was founding editor-in-chief of two award-winning publications for people with cancer and those who care for them: *CR* and *MAMM Magazines*. She also served as director of the American Association for Cancer Research Survivor and Patient Advocacy. Gwen is the chair of the National Human Genome Research Institute's Engaging Communities Around Genomic Medicine, Meeting and Working Group and a guest faculty member at the Center for Patient Partnerships at the University of Wisconsin.



## CHRISTIAN DIMAANO, PhD, MPH

*Director, Medical Sciences  
Gilead Sciences, Inc.*

Christian Dimaano leads a team of payer-facing, health outcomes-focused medical scientists at Gilead Sciences. Christian also holds a faculty position as a Clinical Assistant Professor in the School of Public Health at the University of Washington, where his work with graduate students focuses on cancer health disparities. Christian also currently serves on the Washington State Board of Directors for the American Cancer Society.



# Advancing Therapeutics, Improving Lives.

For 30 years, Gilead has worked to develop medicines that address areas of unmet medical need for people around the world.

Our portfolio of medicines and pipeline of investigational drugs include treatments for HIV/AIDS, liver diseases, cancer, inflammatory and respiratory diseases, and cardiovascular conditions.

Every day we strive to transform and simplify care for people with life-threatening illnesses.



For more information, please visit [www.gilead.com](http://www.gilead.com).

© 2017 Gilead Sciences, Inc.

# PARTICIPANTS

AS OF NOVEMBER 6, 2017



## PAUL EDWARDS

*Assoc. Director Payer Marketing  
Merck*



## PEGGY FUNK

*Executive Director  
Hospice & Palliative Care Network of Maryland*


Margaret (Peggy) Funk oversees management and operations of the Hospice & Palliative Care Network of Maryland. In addition, she co-chairs the Maryland Cancer Collaborative Hospice Data Utilization Workgroup. She formerly served as associate executive director for the Maryland Pharmacists Association (MPhA) and assistant director for the University of Maryland School of Pharmacy. Peggy is a member of National Hospice and Palliative Care Organization, State Hospice Organization Executive Roundtable, American Society of Association of Executive Directors, and NonProfits of Maryland.



## STEPHEN GEORGE, PharmD

*Senior Consultant  
Milliman*

Stephen George assists clients in areas such as health care plan pharmacy operations, management of physician administered and specialty drugs, integration of pharmacy and medical outcomes analysis, and developing ROI evaluations on medical interventions. Stephen has experience in a variety of patient care and management settings, including managed care, hospital, care management and clinical trials. He also has experience with health policy analysis, pharmacoconomics and outcomes research, auditing PBM/specialty pharmacy contracts, 340-B pricing models, implementing disease management models, drug/device pricing, assessing pharmacy MTM programs, and developing "best in class" clinical applications. His previous positions include vice president and partner at Conexus Health, and pharmacy advisor at Hillsborough County Healthcare Plan.



*Hong Hu, Research Advisor,  
Lilly Research Laboratories*

# It begins with a promise to discover medicines that make life better.

Since 1876, we have worked tirelessly to develop and deliver trusted medicines that meet real needs, finding ways to come through no matter the odds. From the development of insulin to the discovery of new treatments for mental illness, we have pioneered breakthroughs against some of the most stubborn and devastating diseases. We bring this same determination to our work today, uniting our expertise with the creativity of research partners across the globe to keep finding ways to make life better.

To find out more about our promise, visit [www.lilly.com/about](http://www.lilly.com/about).  
2016 CA Approved for External Use PRINTED IN USA ©2016, Eli Lilly and Company. ALL RIGHTS RESERVED.

*Lilly*

# PARTICIPANTS

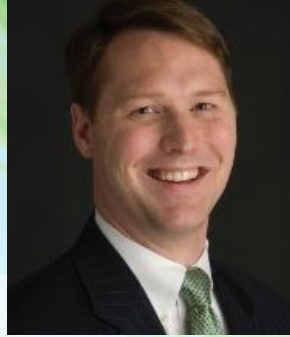
AS OF NOVEMBER 6, 2017



## **TOM HUBBARD, MPP**

*Vice President of Policy Research  
Network for Excellence in Health Innovation  
(NEHI)*

Tom Hubbard's current work at NEHI – national nonprofit, nonpartisan organization composed of stakeholders from across all key sectors of health and health care – focuses on value-based and other novel contracting arrangements in the U.S. His other reoccurring work includes projects on medication management and patient adherence, comparative effectiveness research, and real world evidence. Tom previously worked at the Massachusetts Technology Collaborative, and as executive assistant for economic affairs to U.S. Senator John Kerry.



## **SCOTT JAUCH**

*Director, Oncology Access Strategy  
AstraZeneca*

Scott Jauch responsibilities focus on developing market access strategies for AstraZeneca's US Oncology brands, with an emphasis on innovative reimbursement and care delivery arrangements. Scott joined AstraZeneca in 2014 as director of government affairs and policy. Prior to AstraZeneca, he led government affairs and policy activities for Novartis Vaccines, and spent four years at Avalere Health, where he provided product commercialization and reimbursement strategies to life sciences companies. In addition, he has negotiated pay-for-performance contracts with health plans on behalf of Partners Healthcare in Boston. Scott also has a background in physician practice management and operations, advising members of the Massachusetts Medical Society and the American College of Physicians.



## **SUSANNAH KOONTZ, PharmD, BCOP, FHOPA**

*Principal & Consultant  
Koontz Oncology Consulting LLC*

Susannah Koontz serves as a consultant for pharmacy practice, medical education and clinical research in the fields of pediatric hematology, oncology and hematopoietic cell transplantation. She works with health care providers and pharmaceutical industry professionals to identify research priorities and rationally apply cancer therapies in children. Prior to starting her firm in 2008, she was the clinical pharmacy specialist for over 10 years at the Children's Cancer Hospital at the University of Texas M. D. Anderson Cancer Center. For 2017-2018, Susannah is serving as president of the Hematology/Oncology Pharmacy Association (HOPA).



# MERCK

INVENTING FOR LIFE

## WHY WE INVENT

**AT MERCK, WE ARE INVENTING FOR LIFE.**

We are not inventing for invention's sake – we are on a quest to cure – and to have an impact on countless people's lives worldwide.

Merck is inventing because the world still needs cures for cancer, Alzheimer's disease, HIV, and so many other causes of widespread suffering in people and animals.

We are taking on the world's most challenging diseases to help people go on, unburdened, to experience, create and live their best lives.

Merck. **Inventing** for Life.

To explore our commitment to invention, visit [www.merck.com](http://www.merck.com) and connect with us on Facebook, LinkedIn and Twitter.



# PARTICIPANTS

AS OF NOVEMBER 6, 2017



## ROBERT KRITZLER, MD

*Chief Medical Officer  
Family Health Network/Community Care Alliance  
of Illinois*

Robert Kritzler is part of the Family Health Network executive leadership team that concentrates on medical and pharmacy management, quality, and utilization management. Previously he served as a pediatric resident at Columbia University and as a pediatric endocrine fellow at Johns Hopkins, where he remained on the pediatric faculty until 1985. After that he joined Kaiser Permanente as chief of pediatrics for the Baltimore expansion, and has held various senior medical administrative positions at Kaiser until rejoining Hopkins in 2006. He remains a clinical consultant to Kaiser Permanente. Since 2008 Robert also has served on the board of the Center for Health Value Innovation, and he now is chair of the organization's board of directors.



## ERIN LOPATA, PharmD

*Manager, Clinical Pharmacy  
UPMC Health Plan*

Erin Lopata's professional focus includes formulary management and development, and implementation of care management programs for specialty populations. She also has responsibility for commercial and health care reform exchange formularies. In addition, Erin is an adjunct faculty member at the University of Pittsburgh School of Pharmacy, and is course coordinator for the Concepts of Managed Care elective. She also serves as Residency Program Director for the UPMC Health Plan PGY1 Managed Care Residency Program. Erin is an active member of AMCP, the American Society of Health System Pharmacists, and the Pharmacy Quality Alliance.



## CINDY McDONALD-EVERETT

*Executive Director, Oncology US Value and Access  
Amgen*

Cindy McDonald-Everett leads the development of pricing and reimbursement strategies, value propositions and patient access programs for Amgen's oncology portfolio. She has extensive experience in global payer strategy development and implementation, matrix leadership, and launch strategies. Prior to Amgen, Cindy held various global and U.S. roles in market access at Eli Lilly and Pfizer.



More than **18,000**  
employees in the United States

---

**A comprehensive offering** of  
medicines, vaccines and  
innovative services all over  
the world

---

More than **120** locations  
across North America

© Blue Images/Corbis - 00y00/getty images

## SANOFI FOCUSED ON PATIENTS' NEEDS

Over the years, Sanofi has evolved to meet the new challenges of healthcare worldwide. Today, Sanofi is a global healthcare leader focused on patients. We listen to their needs, treat them, and provide support to them. Through our diversified portfolio of medicines, vaccines and innovative therapeutic solutions, we strive to protect the health and meet the needs of the world's 7 billion people.

US.COR.14.06.005



For more information: [www.sanofi.com](http://www.sanofi.com) - [www.sanofi.us](http://www.sanofi.us)

[www.facebook.com/sanofiUS](http://www.facebook.com/sanofiUS)  [www.twitter.com/sanofiUS](http://www.twitter.com/sanofiUS)  [www.pinterest.com/sanofiUS](http://www.pinterest.com/sanofiUS) **SPEAKING OF SANOFI**  [blog.sanofi.us](http://blog.sanofi.us)

# PARTICIPANTS

AS OF NOVEMBER 6, 2017



## **DONNA MONCUSO, MS, RN**

*Director Payer & Employer Outreach  
National Comprehensive Cancer Network (NCCN)*

Donna Moncuso, who joined NCCN in 2016, has more than 20 years of experience across key health care segments, including health technology/clinical intelligence design, health analytics and research, hospital and outpatient care delivery and leadership, health policy and reimbursement, and biopharmaceuticals. As NCCN's point of contact for payer and payer entities, Donna leads all payer and employer-related projects and programs. Donna also is responsible for vendor relationships with payers, payer-technology vendors, PBMs/SPMs, and employers, with additional accountability for commercialization of the NCCN family of Compendia and related new product development.



## **THERESE MULVEY, MD, FASCO**

*Director - Quality, Safety and Value  
Massachusetts General Hospital Cancer Center*

Therese Mulvey has dedicated her career to providing state-of-the-art community based care for cancer patients. Her philosophy is to empower patients to receive high-quality care in their own communities, with shared decision making among specialists and patients. As director of Breast Medical Oncology at Massachusetts General Hospital/North Shore and the Cancer Center's Director of Quality, Safety and Value, she oversees programs to ensure patients have access to high-quality oncology services and leading-edge clinical cancer research. Therese is board certified in medical oncology and internal medicine. Areas of interest include breast cancer, cancer genetics and how cost and value affects cancer care delivery.



## **KATHRYN MUNOZ, PhD, MPH**

*Field Director, Health Economics and Value Assessment  
Sanofi, Inc.*

Kathryn Munoz serves as Health Economics and Value Assessment Field Director at Sanofi, Inc. In this role, she supports health care and payer evidence requirements by facilitating real-world research as well as value and outcomes-based evaluations to support Sanofi's marketed products and pipeline.

Image: Colored scanning electron micrograph (SEM) of a lung cancer cell.

# oncology

focus

**One focus:** a shared commitment to improve the lives of cancer patients everywhere.

At **TAKEDA ONCOLOGY**, we endeavor to deliver novel medicines to patients with cancer worldwide through our commitment to science, breakthrough innovation and passion for improving the lives of patients.

This singular focus drives our aspirations to discover, develop and deliver breakthrough oncology therapies. By concentrating the power of leading scientific minds and the vast resources of a global pharmaceutical company, we are finding innovative ways to improve the treatment of cancer.

We've built a portfolio of paradigm-changing therapies and a leading oncology pipeline. Though we've made great strides in our fight against cancer, we are determined to do more – to work harder and to reach higher. We continue to seek our aspirations with the same passion, agility and entrepreneurial spirit that has sustained our patient-centric culture and has made us the leaders in oncology that we are today.

We know that our mission is not a quick or simple one, but we are up for the task: **we aspire to cure cancer.**

To learn more, visit us at [takedaoncology.com](http://takedaoncology.com).

 @TakedaOncology

©2016 Millennium Pharmaceuticals, Inc. All rights reserved.

**Takeda**  
ONCOLOGY

# PARTICIPANTS

AS OF NOVEMBER 6, 2017



## GARY OWENS, MD

*President  
Gary Owens Associates*

Gary Owens has 30 years of experience in health care management. He served as vice president of Medical Management and Policy at Independence Blue Cross for 22 years with responsibilities for medical and pharmacy management, technology evaluation and medical policy. Forming his own consulting practice in 2007, he provides strategic and tactical consulting services to a wide range of clients including pharmaceutical manufacturers, device manufacturers and other developers of new technology. He has presented extensively on managed care including at conferences held by AMCP, the National Association of Managed Care Physicians, and the Association for Value-Based Cancer Care. He has written more than 110 journal articles and editorials on managed care, pharmacy, and biotechnology.



## SCOTT RAMSEY, MD, PhD

*Director, HICOR  
Fred Hutchinson Cancer Research Center*

Scott Ramsey directs the Hutchinson Institute for Cancer Outcomes Research, a multidisciplinary team devoted to clinical and economic evaluations of new and existing cancer prevention, screening and treatment technologies. He also is a professor in the Schools of Medicine and Pharmacy at the University of Washington, and has published widely on patterns of care, costs, and cost-effectiveness of treatments for lung, colorectal, and prostate cancer. His research portfolio and interests include: large scale SEER-Medicare/Cancer Registry data linkages, patient reported outcomes, economic modeling of health care interventions, cost-effectiveness analysis, quality of life assessment, patterns of care, health care utilization, economic burden of disease for patients and society, pragmatic trial design, early technology assessment, and stakeholder engagement.



## SYBIL RICHARD-GREEN, JD, MHA, RPh

*Director, Coverage and Reimbursement  
American Society of Clinical Oncology*

Sybil Green oversees policy strategy and analysis of cancer care issues on behalf of oncologists and the patients they serve. Sybil formerly served as vice president of health and wellness compliance at Walmart Stores, where responsibilities included assuring the quality of clinical services provided to Walmart's Pharmacy and Optical patients. Before Walmart, she was the deputy secretary for the Louisiana Department of Health & Hospitals. She also served as the assistant deputy secretary for the Florida Agency for Health Care Administration and Director of Policy and Programs for the National Association of Chain Drug Stores. Sybil sits on the College of Pharmacy Boards of Visitors for Howard University and Xavier University of Louisiana.



# INSPIRATION PERSEVERANCE

In a marketplace where demands for data and differentiation are high, choose a market access partner that can turn your hard work into an inspiring story.

*Choose Xcenda.*

With scientific rigor as a foundation, along with innovative thinking and creative expertise, Xcenda helps uncover and transform evidence into an impactful value proposition that matters to payers and maximizes access to your product. Together, let's inspire success.

Visit us at [www.xcenda.com](http://www.xcenda.com)

 **Xcenda**<sup>®</sup>  
AmerisourceBergen

# PARTICIPANTS

AS OF NOVEMBER 6, 2017



## SCOTT SHORTENHAUS

*Director, Patient Access to Cancer Care Excellence  
Lilly Oncology*

Scott is the director of Lilly Oncology's Patient Access to Cancer Care Excellence in the US. In this capacity, he is responsible for developing and implementing a patient-centered public policy agenda for Lilly Oncology. He works with patient advocacy and professional organizations, legislators, think tanks, and other stakeholders on priorities of mutual interest. Before joining Eli Lilly, Scott political appointee in the Bush administration and an advisor for Wisconsin Governor Scott McCallum and Congressmen Mark Neumann and Paul Ryan. Scott is a native of Carmel, Indiana, and graduated from Taylor University in Upland, Indiana.



## TOM VALUCK, MD, MHSA, JD

*Partner  
Discern Health*

Tom Valuck has served in national leadership roles focusing on quality measurement and value-based payment at the Centers for Medicare & Medicaid Services (CMS) and the National Quality Forum (NQF). Prior to joining Discern Health, Tom spent four years at NQF where he was senior vice president for strategic partnerships. In that role, he oversaw the NQF-convened partnerships-the Measure Applications Partnership and the National Priorities Partnership, as well as NQF's engagement with states and regional community alliances. He served as a senior advisor and medical officer at CMS for four years, where he advised senior agency and Department of Health and Human Services leadership on Medicare payment and quality of care, particularly value-based purchasing.



## JONI WATSON, MBA, MSN, RN, OCN

*Director, Operations  
Baylor Scott & White Health/Oncology Nursing Society*

Joni Watson is director of the Baylor Scott & White McClinton Cancer Center and is an Oncology Nursing Society Director-at-Large. Joni also is a blogger, author and speaker on cancer care, nursing, and leadership and management. She primarily is interested in cancer prevention, oncology operational efficiencies, professional uses of social media, nurse navigation quality outcomes, and cancer survivorship.

# PARTICIPANTS

AS OF NOVEMBER 6, 2017



## **Laurie Wesolowicz, PharmD, FAMCP**

*Consultant  
Specialty Pharmacy*

Laurie Wesolowicz currently serves as a consultant for the specialty pharmacy area. Her background includes leading payor-focused field sales, account management and clinical teams at Diplomat Specialty Pharmacy, Blue Cross Blue Shield of Michigan and Huron Valley Physicians Association. In addition, Laurie has held clinical pharmacy leadership positions at St. Joseph Mercy Health System, St. John Health System, and Detroit Receiving Hospital. She has served as an adjunct clinical assistant professor at University of Michigan's College of Pharmacy for more than 20 years. In 2016, Governor Rick Snyder appointed Laurie as the pharmacist representative to the Michigan Prescription Drug and Opioid Abuse Commission.



## **Jenny Williams, PharmD, RPh**

*Director, Specialty Strategy  
Aetna*

Jenny Williams is responsible for managing the specialty drug pipeline and medical and pharmacy oncology drug strategy at Aetna. Prior roles have included formulary management at the health plan and regional PBM level, Medicare Part D formulary review for the CMS, and work as a retail pharmacist. Jenny is a member of AMCP, the BBCIC G-CSF Workgroup and has previously served on the PQA Medication Use Safety Workgroup.



## **Gregory Wolfe, PharmD**

*Sr. Director, Pharmacy Operations  
Biologics – McKesson Specialty Health*

Gregory Wolfe provides oversight and leadership to all aspects of the Pharmacy Operations at Biologics – McKesson Specialty Health. He is responsible for executing strategic corporate initiatives within the company and ensuring compliance with all regulatory and accrediting agencies. Greg co-chairs Biologics' Clinical Oversight Committee and plays an integral role in the development and execution of Biologics' robust clinical initiatives and patient care programs designed to improve patient outcomes. Greg also volunteers at the Open Door Clinic in Raleigh, NC.



# AMCP STAFF PARTICIPANTS

AS OF NOVEMBER 6, 2017

## KEVIN BRUNS

*Vice President,  
Communications & Marketing*

## MARY JO CARDEN, RPh, JD

*Vice President,  
Government & Pharmacy Affairs*

## JUDY CRESPI-LOFTON

*Writer  
JCL Communications, LLC*

## LAUREN LYLES, PharmD

*Manager of Pharmacy Affairs &  
New Practitioner Programs*

## ZAIN MADHANI

*Program Coordinator,  
Government & Pharmacy Affairs*

## NOREEN MATTHEWS, BSN, MBA

*Program Management  
American Medical Communications*

## TERRY RICHARDSON, PharmD, BCACP

*Director, Product Development*

## BRITTANY N. VOGEL, PharmD, MBA

*Education Program Manager*

## TRICIA LEE WILKINS, PharmD, MS, PhD

*Director, Pharmacy Affairs*

## THANK YOU

To our distinguished participants and guests. The Academy of Managed Care Pharmacy looks forward to holding more partnership forums focused on issues of greatest importance to our 8,000 members, the more than 270 million Americans covered by a pharmacy benefit, and other health care stakeholders.

# THANK YOU TO OUR SPONSORS

AS OF NOVEMBER 6, 2017

abbvie

**AMGEN**<sup>®</sup>

AstraZeneca 

 **FOUNDATION**  
MEDICINE<sup>®</sup>

**Genentech**  
*A Member of the Roche Group*

 **GILEAD**

*Lilly*

 **MERCK**  
INVENTING FOR LIFE

 **SANOFI**

 **Takeda**  
ONCOLOGY

 **Xcenda**<sup>®</sup>  
AmerisourceBergen





Academy of  
Managed Care  
Pharmacy®

675 N WASHINGTON STREET • SUITE 220 • ALEXANDRIA, VA 22314 • [www.amcp.org](http://www.amcp.org)