

 #AMCPoncology

AMCP

Academy of
Managed Care
Pharmacy®

DRIVING VALUE AND OUTCOMES IN



ncology

*Hosted by the
Academy of Managed Care Pharmacy
in partnership with –*

AMCP PARTNERSHIP FORUM •
DULLES, VA • NOVEMBER 15-16, 2016 •

abbvie

AMGEN®



Bristol-Myers Squibb



FOUNDATION
MEDICINE®



ION Solutions
AmerisourceBergen



janssen Oncology
PHARMACEUTICAL COMPANIES OF Johnson & Johnson

Lilly



National
Pharmaceutical
Council®



NOVARTIS
PHARMACEUTICALS

PhARMA
RESEARCH • PROGRESS • HOPE



SANOFI



ONCOLOGY



Xcenda®
AmerisourceBergen



Academy of
Managed Care
Pharmacy®

Reach Peak PERFORMANCE



AMCP MANAGED CARE & SPECIALTY PHARMACY ANNUAL MEETING 2017

MAR 27–30 • COLORADO CONVENTION CENTER • DENVER



The **AMCP Managed Care & Specialty Pharmacy Annual Meeting** is all about adapting and *thriving* in a world of constant change and challenge. This March, against the spectacular backdrop of the Rocky Mountains in the Mile High City, we will bring together the leading experts, decision makers and thought leaders in managed care pharmacy and health care for one great meeting.

- **Educational sessions** that deliver rich content—including the latest research—for those who manage and evaluate specialty pharmacy and other drug therapies, develop and manage networks, and work with medical managers and information specialists
- **Networking events** that allow all the facets of our field to connect, discuss, learn, and problem-solve in a dynamic, collegial setting
- **General Session** keynote speaker who will inform and inspire
- **Informal gatherings and meet-ups** that enhance the attendee experience and afford plenty of opportunities for achieving your meeting goals

It's the managed care and specialty pharmacy event of the year!
Won't you join us?

www.amcpmeetings.org



Academy of
Managed Care
Pharmacy®

WELCOME



Susan A. Cantrell, RPh, CAE

CEO, Academy of Managed Care Pharmacy

Welcome to the Academy of Managed Care Pharmacy (AMCP) partnership forum on driving value and outcomes in oncology. Our work over the next two days will enable AMCP to prioritize key issues that will lead to important advances in cancer treatment and outcomes.

We are in an era of remarkable oncology innovation. The vast pipeline of products before the FDA offers new hope for treatments and cures of cancer that were inconceivable only a few short years ago. But the reality is that many of these products are expensive, with some costing more than \$10,000 per month.

What's also clear is that some of these advances offer better outcomes than others in terms of quality of life, remission rates and possibly a cure.

Our challenge: how can we ensure that patients receive the best oncology treatments available, while remaining good stewards of our health care dollars?

AMCP addresses this by focusing on the concept of "value" when making health care decisions. This focus will drive our work over the next two days as we examine such topics as: current methodologies for evaluating oncology products and devices; needs for research on balancing population management with personalized medicine; risk-based or indication-specific contracting in oncology; and the challenges and opportunities with use of emerging evaluation and treatment tools in managed care settings.

In a major report this year, the American Society of Clinical Oncology (ASCO) said "the collective wisdom of stakeholders throughout the oncology community will be needed to overcome challenges and ensure every patient with cancer receives high-value, high-quality care."

AMCP welcomes your participation as we work together to accomplish this vital goal.

I would like to extend a warm thank you to our sponsors who made this event possible: AbbVie, Amgen, Bristol-Myers Squibb, Celgene, Foundation Medicine, Intrinsiq Specialty Solutions, Janssen Oncology and Johnson and Johnson Healthcare Systems Inc., Eli Lilly and Company, National Pharmaceutical Council, Novartis Pharmaceuticals Corporation, Pharmaceutical Research and Manufacturers of America, Sanofi, Takeda Oncology, and Xcenda. I look forward to a very productive forum.

Sincerely,

Susan A. Cantrell, RPh, CAE
CEO, Academy of Managed Care Pharmacy



#AMCPoncology

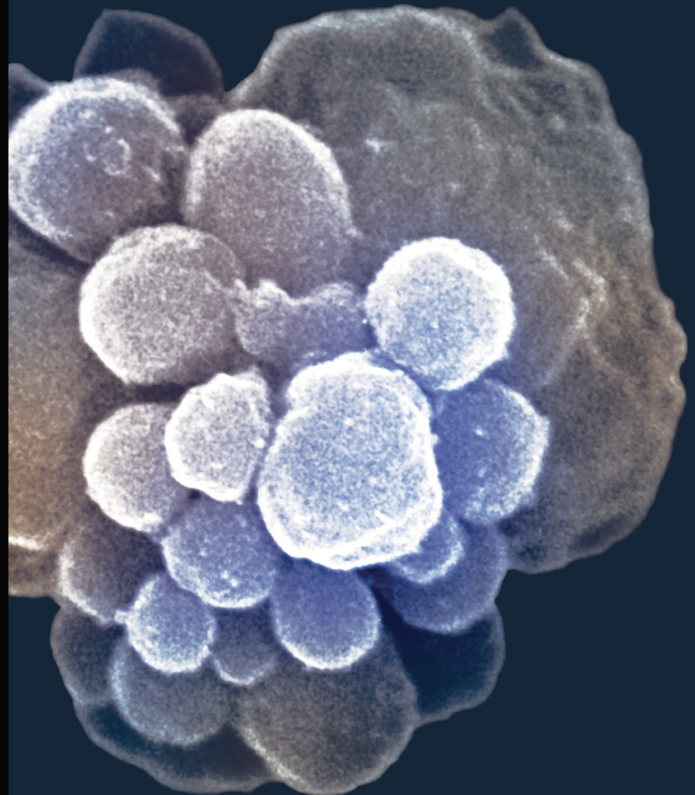
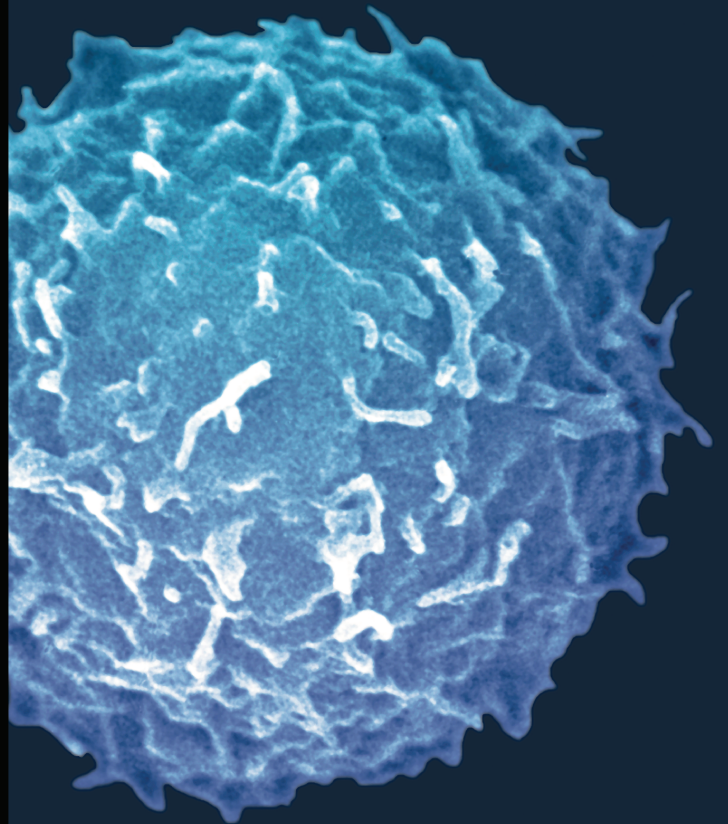
ADDRESSING THE TOUGHEST CHALLENGES IN ONCOLOGY TAKES ALL OF US.

That's why we collaborate each day
with peers, academics, clinical experts
and others.

Together, we aim to create solutions
that work against the ability of cancer
cells to survive.

At AbbVie, our work starts with
science and ends with a vision of a
better future for patients around
the world.

Learn more at abbvie.com/oncology



GBL/COR/0915/0556
CM 0006 0915

PEOPLE. PASSION.
POSSIBILITIES.

abbvie

AGENDA

TUESDAY, NOVEMBER 15, 2016

8:30 am – 9:00 am	BREAKFAST
9:00 am – 9:30 am	Welcome & Introductions Susan A. Cantrell, RPh, CAE <i>Chief Executive Officer, Academy of Managed Care Pharmacy</i> Moderator: Susan Winckler, BSPH, JD <i>Chief Risk Management Officer, Leavitt Partners</i>
9:30 am – 10:15 am	Presentation – Defining Value and Outcomes in Oncology Gary M. Owens, MD <i>President, Gary Owens Associates</i>
10:15 am – 10:30 am	BREAK
10:30 am – 11:30 am	Panel Discussion – Opportunities and Challenges with Oncology Valuation Stephen Grubbs, MD <i>Vice President, American Society of Clinical Oncology (ASCO)</i> Ann Nguyen, PharmD <i>Oncology Solutions Director, Anthem Inc.</i> Kimberly Westrich, MA <i>Vice President, Health Services Research, National Pharmaceutical Council</i> Andrew Yu, PharmD, BCOP <i>Oncology Clinical Coordinator, Group Health</i>
11:30 am – 12:30 pm	Workshop #1 – Defining Value and Outcomes in Oncology
12:30 pm – 1:30 pm	LUNCH – Herndon/Reston Room
1:30 pm – 2:15 pm	Report Out and Discussion on Workshop #1
2:15 pm – 3:15 pm	Panel Discussion – Outcomes-based/Risk-based contracting in Oncology Harold L. Carter, PharmD <i>Director, Clinical Solutions, Express Scripts Holding Company</i> Tim Chiu, PharmD, BCPS <i>Pharmacist Evidence Analyst & Strategist, Kaiser Permanente</i> Michelle Drozd, ScM <i>Deputy Vice President, Policy & Research, Pharmaceutical Research and Manufacturers of America</i> Gareth Harper, BA, MSC, PhD <i>Managing Consultant, Optimity Advisors</i>
3:15 pm – 3:25 pm	BREAK

continued on page 5



Pioneering science delivers vital medicines™

Transforming the language of life into vital medicines

At Amgen, we believe that the answers to medicine's most pressing questions are written in the language of our DNA. As pioneers in biotechnology, we use our deep understanding of that language to create vital medicines that address the unmet needs of patients fighting serious illness – to dramatically improve their lives.

For more information about Amgen, our pioneering science and our vital medicines, visit www.amgen.com.



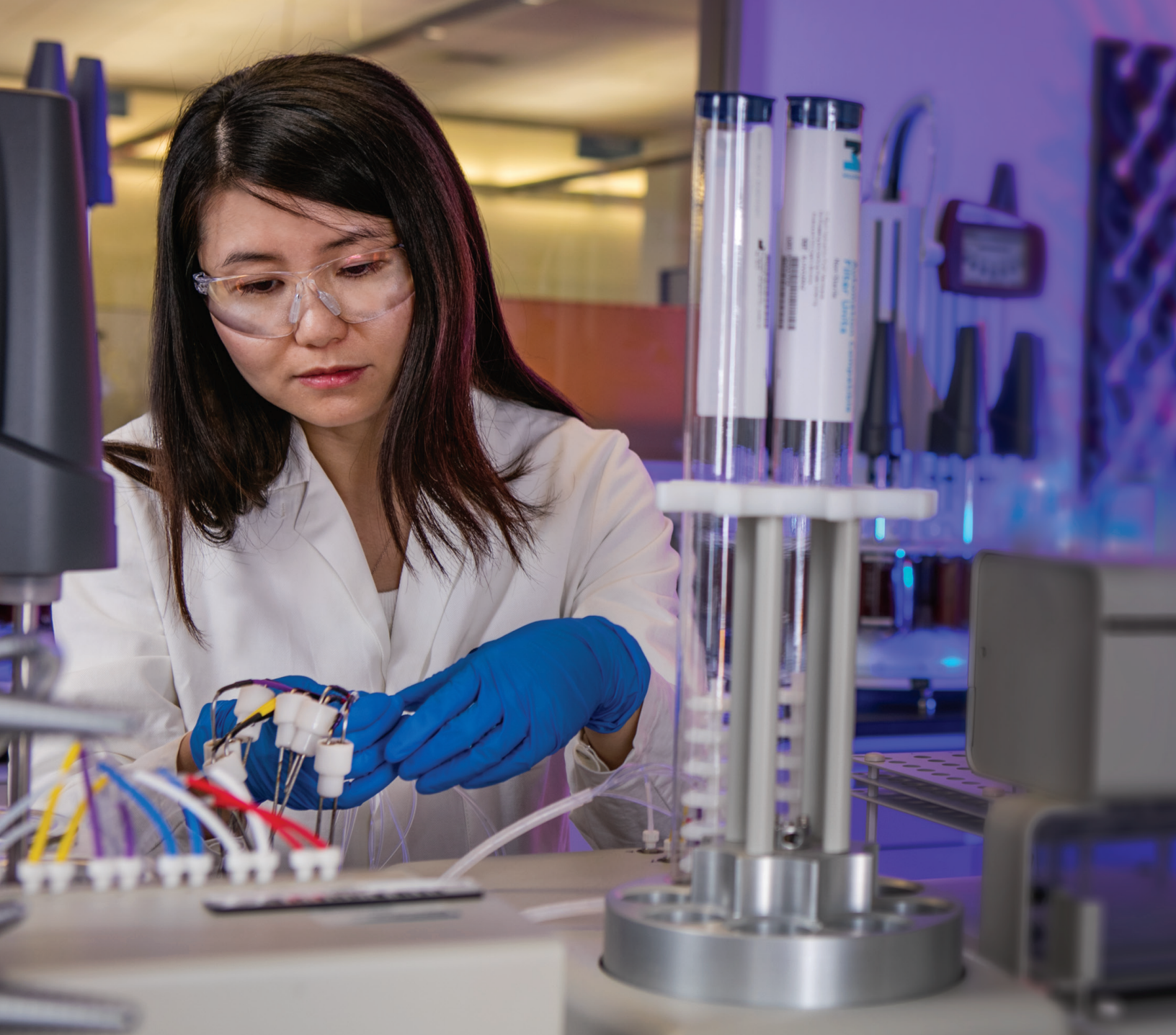
AGENDA

TUESDAY, NOVEMBER 15, 2016 *cont'd*

3:25 pm – 4:25 pm	Workshop #2 – Outcomes-based/Risk-based contracting in Oncology
4:25 pm – 5:10 pm	Report Out and Discussion on Workshop #2
5:10 pm – 5:30 pm	Agreement on Consensus Recommendations for Day 1 & Wrap-Up
5:30 pm	RECEPTION AND DINNER – <i>Chantilly/Sterling Room</i>

WEDNESDAY, NOVEMBER 16, 2016

8:00 am – 8:30 am	BREAKFAST
8:30 am – 9:00 am	Welcome & Summary of Day 1
9:00 am – 9:45 am	Presentation – The Promise of Precision Medicine and how it will change the way we treat patients in 2017 and beyond Rachel Anhorn, PharmD <i>Director, Payer Medical Affairs, Foundation Medicine</i>
9:45 am – 10:00 am	BREAK
10:00 am – 11:00 am	Workshop #3 – Precision Medicine/Pharmacogenomics
11:00 am – 11:45 am	Report Out and Discussion on Workshop #3
11:45 am – 12:00 pm	Review of Key Recommendations and Action Items
12:00 pm – 12:15 pm	Next Steps & Closing Remarks
12:15 pm – 1:00 pm	LUNCH – <i>Salon AB</i>



AT BRISTOL-MYERS SQUIBB,
WE ARE WORKING TOGETHER
FOR PATIENTS

Our mission is clear — we discover, develop and deliver transformational medicines that help people prevail over serious diseases.

Our sense of urgency is real — we work every day to push the boundaries of scientific discovery and to make a meaningful difference in the lives of patients.

It's what we do. It's why we do it.



Bristol-Myers Squibb

www.bms.com

Moderator

SUSAN C. WINCKLER, RPH, ESQ.

Chief Risk Management Officer, Leavitt Partners, LLC

Susan Winckler is the chief risk management officer for Leavitt Partners as well as a lead contributor in the firm's alliance management and regulatory consulting activities. A pharmacist and attorney by training, Susan is the former chief of the staff for the U.S. Food and Drug Administration (FDA) within the Department of Health and Human Services (HHS) and former president and CEO of the Food and Drug Law Institute, a nonprofit organization based in Washington, D.C., which provides a marketplace for discussing food and drug law issues through conferences, publications, and member interaction.

Susan is a graduate of the University Of Iowa College Of Pharmacy and the Georgetown University Law Center, magna cum laude. She is a Fellow of the American Pharmacists Association, a Distinguished Alumna of the University Of Iowa College Of Pharmacy, delivered the William A. Zellmer Lecture for the American Society of Health-System Pharmacists and named as Distinguished Young Alumna of the University of Iowa Foundation. She was elected a Trustee of the United States Pharmacopeial Convention (USP) for the 2015-2020 term, elected a Distinguished Fellow in Public Policy to the National Academies of Practice, Pharmacy Academy, and named a Woman of Distinction by Alpha Xi Delta Fraternity.



Thank You
to our distinguished participants and guests.

The Academy of Managed Care Pharmacy looks forward to holding more partnership forums focused on issues of greatest importance to our 8,000 members, the more than 200 million Americans covered by the pharmacy benefit, and other health care stakeholders.

REALIZING THE VALUE OF INNOVATION



Patients, Science, and Innovation are the foundation of everything we do. At Celgene, we believe in an unwavering commitment to medical innovation, from discovery to development. Our passion is relentless—and we are just getting started.



Forum Participants

RACHEL ANHORN, PHARM D

*Director, Payer Medical Affairs
Foundation Medicine*

Rachel is the Director of Payer Medical Affairs at Foundation Medicine. She works to help cancer patients and their healthcare providers gain access to comprehensive genomic diagnostic information in order to direct the rationale and evidence based use anti-cancer medications. Her previous roles have included Biosimilars Field Medical Director at Pfizer, Associate Director HEOR and MSL at Boehringer Ingelheim. These positions covered multiple disease states, including: oncology, inflammation, respiratory, diabetes and cardiovascular. She has a BS in Biochemistry from UWRF, a PharmD from the University of Minnesota and completed a Rutgers Post-Doc Fellowship in Medical Strategy and Scientific Communications.



REBECCA BORGERT, PHARM D, BCOP

*Product Development Director, Clinical Oncology
Magellan Rx Management*

Dr. Borgert is a Board Certified Oncology Pharmacist who has spent her career focusing on the care of oncology patients. After completing a PGY-1 residency at Shands Hospital at the University of Florida, Dr. Borgert completed advanced training in pediatric oncology at St. Jude Children's Research Hospital. Dr. Borgert has worked in the bone marrow transplant unit, inpatient oncology and ambulatory oncology care settings providing care to both pediatric and adult oncology patients. She served as the Director of Pharmacy for a large hospice program and is now the Director of Oncology Clinical Program Development for Magellan Rx Management.



SEAN BUCKLEY, PHARM D, BA

Dr. Sean Buckley is the Regional Pharmacy Director of the Northeast Region for a Fortune 200 company. In this capacity he oversees all aspects of the pharmacy department for multiple states including maintaining formularies, implementing of all clinical policies and initiating cost-control measures. Dr. Buckley received his PharmD from Massachusetts College of Pharmacy and Health Sciences and his Bachelor of Arts degree in Biochemistry from Saint Anselm College.





Foundation Medicine is leading a transformation in cancer care, where each patient's treatment is informed by a deep understanding of the molecular changes that contribute to their disease. By providing comprehensive genomic profiles, a suite of support and technology services, and an expertise driven by a knowledge base of over 90,000 patients, we are able to help oncology care teams discover more treatment options for their patients.

See more at foundationmedicine.com



Forum Participants

HAROLD L. CARTER, PHARMD

*Director, Clinical Solutions
Express Scripts Holding Company*

Harold joined Express Scripts in 2011 as a clinical product manager and was responsible for the development of new specialty utilization management programs. In 2015, Harold was promoted to a Director of Clinical Solutions to lead the strategic development and management of Express Scripts' utilization management initiatives. In 2016, Harold assumed his current role as Director of Strategic Initiatives. In this role, he is responsible for the development and management of Express Scripts' SafeGuardRx Solution.



LAURENT CARTER, MBA

*Vice President of Strategic Payer Marketing
Bristol-Myers Squibb*

With over 25 years of executive experience in the Pharmaceutical/Biotech and Healthcare industry, Laurent has served in leadership roles in Sales, Sales Operations, National/Corporate Accounts, Hospital Systems, Brand Marketing, Strategic Planning, Promotions, Payer Marketing and Market Access. Laurent has had extensive experience across multiple Therapeutic areas including Oncology Rheumatology, Immunology, Cardiology, Neurology, and Nephrology. He has had extensive experience building organizational marketing capabilities in the area of value marketing including policy and process for integration of Pharmaco-economics into FDAMA-114 tools and materials for multiple organizations. Currently Laurent leads the US Strategic Payer Marketing function at Bristol Myers Squibb. His team is responsible for Payer and Institutional Organized customer strategy development, value proposition development, as well as value population health, and quality tool and program development across the BMS portfolio of products.



BERRIE C. CHILD, PHARMD, BCOP

*Hematology/Oncology Clinical Pharmacist
LDS Hospital*

I have been privileged to afford a lifelong obsession with learning. Berrie graduated pharmacy school in 2002 from Creighton University with a doctorate degree. Then completed a 1st year general pharmacy residency with Intermountain Medical Center and Primary Children's Hospital. Hematology and oncology has become a passion for Berrie. Currently working at LDS Hospital in the bone marrow transplant program she is instrumental in developing new protocols and maintaining a safe work environment. Education is a top priority and Berrie is involved in precepting pharmacy students and residents as well as teaching nurses, midlevel providers, physicians and of course patients. Becoming board certified in oncology was a goal I was able to accomplish in 2014. In addition to working full-time she is a speaker for Jazz Pharmaceuticals.





We Support the Health of your Practice

With the Same Dedication that You Support Your Patients

Your number one priority is the health of your patients. With the changing healthcare landscape, our number one priority is the business health of your practice.

Dedicated exclusively to the viability of community oncology, ION Solutions provides contracting, technology, education and advocacy support that ensures you have the tools to run your practice both efficiently and effectively. With the practice support of ION Solutions, you can navigate this changing environment and focus on providing quality care for your patients.

To learn how ION Solutions enables community oncology practices to improve operational efficiency, financial performance and quality of care, contact your Strategic Account Manager or visit IONOnline.com.

To experience ION Solutions advocacy support, visit ourcommunitycounts.org.

Forum Participants

TIM CHIU, PHARM.D, BCPS

*Pharmacist Evidence Analyst & Strategist
Kaiser Permanente*

Tim is a Pharmacist Evidence Analyst and Strategist with Kaiser Permanente Drug Information Services in Oakland, California. He covers the areas of Hematology/Oncology and Palliative Care, and his responsibilities include providing evidence reviews to clinicians, formulary management, and drug pipeline analysis. Prior to his current role, he was an oncologist pharmacist at an oncology/infusion clinic in Kaiser Permanente Northern California. Tim first joined Kaiser Permanente in 2010.

**RYAN M. COX, BSPHARM, RPH, MBA**

*Director, Clinical Pharmacy Strategies
Highmark, Inc.*

Ryan M. Cox, BSPHarm, MBA, Director, Clinical Pharmacy Strategies, Highmark, Inc. – former Director of Clinical Affairs at WellPoint/Anthem, former Director of Pharmacy at CareSource, and former Manager of Pharmacy Networks Pricing Strategies and Reimbursement at Humana. Earned a Bachelors of Science from Ohio Northern University, Raabe College of Pharmacy and a Masters of Business Administration from Miami University, Farmer School of Business.

**SUZETTE DIMASCIO, CHE, CMCE, CPC**

*President/CEO
CSI Specialty Group*

As a thought leader, industry expert and frequent educator on all things Specialty, Suzette's strategic insight on marketplace trends in specialty pharmacy continually help align and enlighten this continually pivoting industry. Under Suzette's leadership, CSI has become known as the industry's leader in consulting and talent acquisition; offering strategic solutions to market channels from Health Systems to Manufacturers and, in 2016, was named one of *Consulting Magazine's* Fastest Growing Firms, ranking 5th out of 50, as well as chosen as one of Goldman Sach's Top Growing Businesses.





*Hong Hu, Research Advisor,
Lilly Research Laboratories*

It begins with a promise to discover medicines that make life better.

Since 1876, we have worked tirelessly to develop and deliver trusted medicines that meet real needs, finding ways to come through no matter the odds. From the development of insulin to the discovery of new treatments for mental illness, we have pioneered breakthroughs against some of the most stubborn and devastating diseases. We bring this same determination to our work today, uniting our expertise with the creativity of research partners across the globe to keep finding ways to make life better.

To find out more about our promise, visit www.lilly.com/about.
2016 CA Approved for External Use PRINTED IN USA ©2016, Eli Lilly and Company. ALL RIGHTS RESERVED.

Lilly

Forum Participants

MICHELLE DROZD, SCM

*Deputy Vice President, Policy and Research
Pharmaceutical Research and Manufacturers of America*

Michelle Drozd is a Deputy Vice President in the Policy and Research department at the Pharmaceutical Research and Manufacturers of America. Michelle focuses on issues related to how the pharmaceutical industry is adapting to the increasingly competitive and value-based healthcare environment. Prior to joining PhRMA, Michelle managed a quality improvement team at Partners Healthcare that helped that integrated delivery system reduce readmissions, identify and manage high risk patients, conduct care management programs, improve end-of-life care, and implement a quality improvement training program. She also analyzed financials for hospitals and post-acute-care.



DENISE GLOBE, PHD

*VP & Head US Oncology HEOR
Novartis*

Denise Globe, PhD, has over 25 years of experience in health care with a focus on quantitative policy research and direct research experiences in disease management including the outcomes, process, financing and delivery of care. Over the past 9 years, she has focused on economic and outcomes research as a senior director in Global Health Economics in two large biotech companies. She has led global access, pricing and reimbursement activities for multiple product launches, developing evidence for health technology assessments for both global and US stakeholders. Currently she leads a group of health economic and outcomes researchers focused on US health outcomes research for Novartis oncology and rare disease products



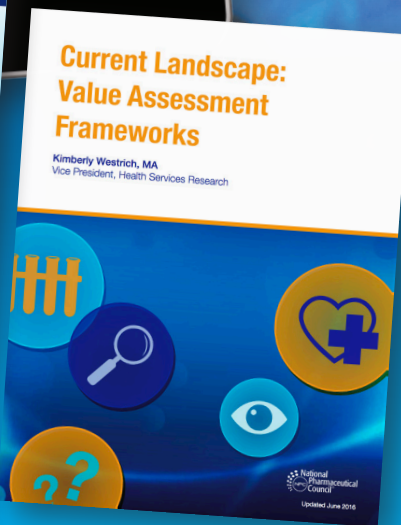
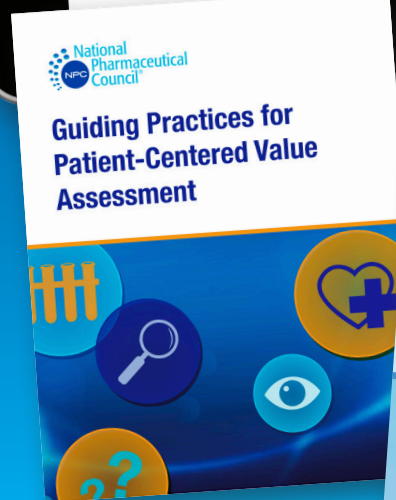
STEPHEN GRUBBS, MD

*Vice President
American Society of Clinical Oncology (ASCO)*

Dr. Grubbs joined the American Society of Clinical Oncology (ASCO) in July, 2015 as Vice President of the Clinical Affairs Department after 31 years as a practicing medical oncologist in Newark, Delaware at the Helen F. Graham Cancer Center. He served as managing partner of his independent medical practice, Medical Oncology Hematology Consultants, PA. He is a chemical engineering graduate of Purdue University and graduate of the Thomas Jefferson University Medical School. Medical postgraduate training in Internal Medicine was completed at the Medical Center of Delaware and Hematology and Oncology at the Dartmouth Hitchcock Medical Center.



National Pharmaceutical Council



More than 60 years of experience in developing peer-reviewed policy research, white papers and online resources focused on the critical issues of **evidence**, the **value** of medicines for patients, and pharmaceutical **innovation**. View our work at www.npcnow.org.



1717 Pennsylvania Avenue, NW | Suite 800 | Washington, DC 20006
202.827.2100 | www.npcnow.org | info@npcnow.org

Forum Participants

GARETH HARPER, BA, MSC, PHD

*Managing Consultant
Optimity Advisors*

Dr. Gareth Harper is a Managing Consultant at Optimity Advisors, and is Optimity's Chief Economist and Analyst. He has responsibility for all of Optimity's economic and analytical work, and contributes to projects and Business Development across all areas of the company's activities. Gareth has many years of experience in applying economics to help solve problems, in particular in the areas of economic evaluation and appraisal of health care programs, and of the economics of payment mechanisms such as outcomes based commissioning. In addition, Gareth has extensive experience in developing and reviewing transformation business cases.

KEVIN HOGAN, BSPHARM, RPH

*Clinical Pharmacist Consultant
OmedaRx (Regence Health Plan)*

Kevin's pharmacy career spans over 25 years and includes experience in diverse settings, including a university teaching hospital, community and specialty clinics, a staff model HMO, and a large Health plan/PBM. He received his pharmacy degree at the University of Wisconsin – Madison and is currently employed at OmedaRx in Portland, OR. His primary responsibilities at OmedaRx include in-depth, evidence-based appraisal of oncology medications, co-chairing the OmedaRx Oncology P&T Subcommittee, and developing utilization management strategies for oncology medications.



LOUIS HUDSPETH, MS, PHD

*Director, Medical Managed Care – Oncology
Sanofi*

Dr. Louis Hudspeth, Director – Medical Managed Care – Oncology, combines 6 years of Evidence Based Medicine and 17+ years of oncology experience for Sanofi Genzyme. Dr. Hudspeth has held numerous leadership positions within US and Global Medical Affairs. Dr. Hudspeth, a graduate of The University of Texas at Austin, received his Bachelors of Science, dual major – Biology and Biochemistry (1992), Masters of Science in Kinesiology and Physiology (1995), and PhD in Cardiovascular Physiology (1997). Dr. Hudspeth served as Chief Cardiovascular Physiologist for the Air Force Office of Scientific Research / National Aeronautics and Space Administration until joining the pharmaceutical industry.





HOPELESS

PhRMA is a proud supporter of the
Academy of Managed Care Pharmacy.

We are committed to helping patients live longer,
healthier lives.

FROM **HOPE** TO
cures

fromhopetocures.org

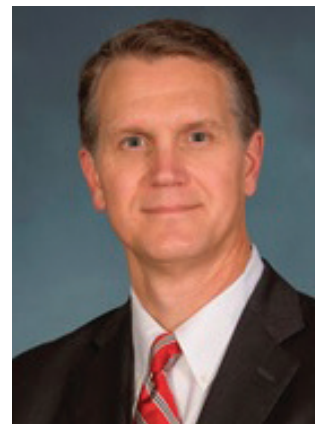
PhRMA
RESEARCH • PROGRESS • HOPE

Forum Participants

ROB JACOBSON

*Executive Director – U.S. Value and Access – Oncology
Amgen*

Rob Jacobson is the Executive Director, U.S. Value and Access for Oncology. During his more than 15 years at Amgen, Rob has held a variety of leadership roles in market access, marketing, and sales in nephrology, inflammation, bone health and cardiology. Prior to Amgen, Rob worked in various sales and marketing leadership roles at Schering-Plough, Johnson and Johnson, Cardinal Health, NDC Health Information Services, and was a Consulting Group Director at CHS. Rob received his B.S. degree in Economics from Arizona State University.

**TATYANA KAPUSTYAN, PHARM.D.**

*Senior Director, Healthcare Solutions, Global Medical Affairs
Abbvie*

Tatyana Kapustyan, Pharm.D. is a Senior Director, Healthcare Solutions, Global Medical Affairs at Abbvie. In this role she is responsible for overseeing the development and execution of medical and scientific strategies aimed at market access stakeholders in oncology including payer, healthcare value assessment, guidelines bodies, advocacy and scientific organizations. Dr. Kapustyan is an experienced healthcare executive with extensive medical, health economic, reimbursement, access and pricing experience in the US and global markets across product lifecycle including product commercialization and new product development for early, mid and late-stage pipeline assets.

**EDWARD KISSEL**

*Sr. Director, IntrinsicQ Analytics
IntrinsicQ Specialty Solution*



More than **18,000**
employees in the United States

A comprehensive offering of
medicines, vaccines and
innovative services all over
the world

More than **120** locations
across North America

© Blue Images/Corbis - ooyoo/Getty Images

SANOFI FOCUSED ON PATIENTS' NEEDS

Over the years, Sanofi has evolved to meet the new challenges of healthcare worldwide. Today, Sanofi is a global healthcare leader focused on patients. We listen to their needs, treat them, and provide support to them. Through our diversified portfolio of medicines, vaccines and innovative therapeutic solutions, we strive to protect the health and meet the needs of the world's 7 billion people.

US.COR.14.06.005



For more information: www.sanofi.com - www.sanofi.us

www.facebook.com/sanofiUS  [www.twitter.com/sanofiUS](https://twitter.com/sanofiUS)  www.pinterest.com/sanofiUS **SPEAKING OF SANOFI**  blog.sanofi.us

Forum Participants

JAMES R. LANG, PHARM.D, MBA

*VP of Pharmacy Services
BCBS of Michigan*

Dr. Lang has 30 years experience in managing pharmacy programs, serving as a senior executive in a variety of health care settings that include pharmacy benefit management companies, managed care, and hospital systems. Currently, Dr. Lang is the Vice President of Pharmacy Services for Blue Cross Blue Shield of Michigan, a non-profit health care company that serves approximately 4.5 million individuals and pays \$3 billion in drug claims every year on behalf of its members. Most recently, James served as President of Anthem Prescription Management where he grew the company from serving two million members to over seven million members. Prior to joining Anthem, he was the President of Healthsource Rx, a subsidiary of Healthsource that provided pharmacy benefit management services for approximately 1.5 million members in fifteen states.



KELLIE MEYER, PHARM.D, MPH

*Senior Director, Global Health Economics and Outcomes Research
Xcenda*

Kellie Meyer, Pharm.D, MPH, is a Senior Director and leads the Global Health Economics Team in Global Health Economics & Outcomes Research (GHEOR) Scientific Consulting at Xcenda. In this role, she leads GHEOR engagements including economic modeling, global market access strategy, comparative effectiveness research, outcomes analyzers, quality improvement programs, dossiers, and scientific publications. Dr. Meyer also has expertise in developing value propositions and gathering payer insights to inform market access and GHEOR initiatives. Dr. Meyer's experience ranges across several disease areas including neurology, mental health, hematology, infectious disease, cardiology, anesthesiology, rare/orphan diseases, and oncology. She has authored a variety of scientific publications appearing in *Journal of Managed Care Pharmacy*, *Journal of Medical Economics*, *Current Medical Research and Opinion*, *Journal of Clinical Gastroenterology*, among others.



DONNA MONCUSO, MS, RN

*Director of Payor and Employer Outreach
National Comprehensive Cancer Network (NCCN)*

Donna Moncuso has over 20 years of experience in healthcare, most recently in health technology clinical intelligence design and population health care management. Prior to this Donna consulted and held analytical, reimbursement, product development and clinical leadership positions in the healthcare industry, working across segments such as biopharmaceuticals, managed care, physician practice management, employer, hospital and outpatient care delivery. She has a Master's degree and current RN license. Most recent post-graduate studies have been related to health outcomes research.



Image: Colored scanning electron micrograph (SEM) of a lung cancer cell.

oncology

focus

One focus: a shared commitment to improve the lives of cancer patients everywhere.

At **TAKEDA ONCOLOGY**, we endeavor to deliver novel medicines to patients with cancer worldwide through our commitment to science, breakthrough innovation and passion for improving the lives of patients.

This singular focus drives our aspirations to discover, develop and deliver breakthrough oncology therapies. By concentrating the power of leading scientific minds and the vast resources of a global pharmaceutical company, we are finding innovative ways to improve the treatment of cancer.

We've built a portfolio of paradigm-changing therapies and a leading oncology pipeline. Though we've made great strides in our fight against cancer, we are determined to do more – to work harder and to reach higher. We continue to seek our aspirations with the same passion, agility and entrepreneurial spirit that has sustained our patient-centric culture and has made us the leaders in oncology that we are today.

We know that our mission is not a quick or simple one, but we are up for the task: **we aspire to cure cancer.**

To learn more, visit us at takedaoncology.com.

 @TakedaOncology

Forum Participants

THERESE M. MULVEY, MD, FASCO

*Breast Oncology Medical Director - MGH North Shore
Massachusetts General Hospital*

Dr. Therese M. Mulvey, MD, FASCO is the Director of Breast Oncology at the Massachusetts General Hospital North Shore Cancer Center in Danvers, MA. She was previously the Physician-in-Chief at Southcoast Centers for Cancer Care in New Bedford, Massachusetts. Dr. Mulvey has previously worked as a physician at other community practices in Massachusetts, including East Boston Neighborhood Health Center and Commonwealth Hematology Oncology, where she also served as President and Chief Executive Officer. She is an Assistant Professor at Harvard Medical School and as an Assistant Professor at Tufts University School of Medicine. Dr. Mulvey has served as Chair of the Clinical Practice Committee and on the Editorial Boards of the Journal of Oncology Practice. She has served on the Cancer Quality Alliance and as Chair of the Oncology Carrier Advisory Committee. Dr. Mulvey currently serves on the Board of Directors of ASCO.



ANN NGUYEN, PHARM.D

*Oncology Solutions Director
Anthem, Inc.*

Ann Nguyen has had the privilege and opportunities to be at the forefront of key industry transforming events—to create and shape strategies, products, and services for specialty pharmacy, health IT, and oncology. Currently, she is the Oncology Solutions Director for Anthem Inc., jointly responsible for the development and implementation of oncology innovations across Anthem's 14 Blue Cross Blue Shield plans. Dr. Nguyen received her Bachelor of Science from the University of California, Riverside (UCR) and her Doctorate of Pharmacy from the University of Southern California (USC).



GARY M. OWENS, MD

*President
Gary Owens Associate*

Dr. Gary Owens has 30 years' experience in healthcare management. Dr. Owens served as the Vice President of Medical Management and Policy at Independence Blue Cross for 22 years with responsibilities for medical and pharmacy management, technology evaluation and medical policy. Forming his own consulting practice in 2007, he provides strategic and tactical consulting services to a wide range of clients including pharmaceutical manufacturers, device manufacturers and other developers of new technology.

Note: Dr. Owens is a member of the AMCP Board of Directors; however, not representing the Board at this meeting. His views are his own and may not reflect that of AMCP and/or the AMCP Board of Directors.





INSPIRATION

In a marketplace where demands for data and differentiation are high, choose a market access partner that can turn your hard work into an inspiring story.

Choose Xcenda.

With scientific rigor as a foundation, along with innovative thinking and creative expertise, Xcenda helps uncover and transform evidence into an impactful value proposition that matters to payers and maximizes access to your product. Together, let's inspire success.

Visit us at www.xcenda.com



Forum Participants

COREY PELLETIER

*Director of US Health Economics and Outcomes Research
Celgene*

Corey Pelletier is currently Director of US Health Economics and Outcomes Research at Celgene. She leads up the Solid Tumor HEOR team and oversees the RWE and outcomes research activity and supports the market access and contracting functions. She has worked previously at Eisai Inc and Novartis Oncology in various Global Health Economics and Market Access roles. Corey earned a PhD in Molecular Cell Biology at Washington University in St. Louis in the Division of Molecular Oncology in the Department of Internal Medicine and holds a BA in Biochemistry from Vassar College.



SARAH SCARPACE PETERS, PHARM.D, MPH, BCOP

*President
Hematology/Oncology Pharmacy Association (HOPA)*

Sarah is Associate Professor at the Albany College of Pharmacy and Health Sciences and has a practice in the outpatient clinics of the St. Peter's Health Partners Cancer Care Center in Albany, NY. In addition to clinical practice, Dr. Scarpace teaches courses in oncology pharmacotherapy, oncology drug interactions and pharmacogenomics, cancer screening/prevention/early detection, and foundations of pharmacy. She has authored a number of papers and book chapters and frequently provides continuing education at local, state, and national professional meetings on various topics in oncology.



NISHA PHERWANI, PHARM.D, BCOP

*Clinical Director, Oncology & Pain Management
Cardinal Health*

Nisha Pherwani, PharmD, BCOP is the Clinical Director of Oncology for Cardinal Health. She received her degree in Texas at University of Houston and trained at MD Anderson Cancer Center. She joined Cardinal Health in 2003 and has worked in various operational and clinical roles in hospitals around the country. In her current role, she provides support to hospitals nationwide on the treatment and supportive care of cancer patients. Her current responsibilities include review, analysis, and dissemination of clinical literature, implementation of best practices, policy and procedure development, and identification of cost containment strategies.





EDUCATION

enhance your

VALUE ASSESSMENT SKILLS

with tools and training
for evidence evaluation

Understanding Comparative Effectiveness Research (CER) is the key to efficiently and effectively assessing the value of new treatments using multiple types of studies to inform medical policy and decision-making.

Online tools and training through the **CER Collaborative**, a joint program developed by the Academy of Managed Care Pharmacy, International Society for Pharmacoeconomics and Outcomes Research, and National Pharmaceutical Council, have been **updated and enhanced**. Enroll in the CER Certificate Program and gain:

- Expert knowledge in evidence evaluation
- Skills for applying research evaluation tools to assess recent clinical and formulary reviews
- A robust, interactive, online learning environment designed for hands-on practice using case studies

The program is made up of five online modules and one final interactive peer workshop—the live session can be presented online or in person at designated events. The CER Certificate Program allows participants to earn 19 continuing pharmacy education credit hours.

Visit www.amcp.org/CERCertificate today for more information.

About the Collaborative—AMCP, ISPOR, and NPC formed the CER Collaborative to provide greater uniformity and transparency in the evaluation and use of evidence for coverage and health care decision-making with the ultimate goal of improving patient outcomes.

Developed by the **CER Collaborative**



Academy of
Managed Care
Pharmacy®



Forum Participants

RAMI RIHANI, PHARM.D

*Administrator of Pharmacy & Chronic Disease Management
Advocate Health Care*

Rami Rihani, PharmD, is the Administrator of Pharmacy and Chronic Disease Management for Advocate Health Care. As Administrator, he is tasked with providing executive service line leadership and strategic oversight for Ambulatory Pharmacy Services (operational and clinical) as well as Chronic Disease Management activities across the employed physician business units. In addition, Rami provides leadership support to ensure execution on key Population Health initiatives and Advocate's Value Based relationships (i.e. Accountable Care Organization, Medicare Shared Savings Program, and Global Risk contracts).



JOSHUA ROTH, MHA, PHD

*Assistant Member, Hutchinson Institute for Cancer Outcomes Research
Fred Hutchinson Cancer Research Center
Affiliate Assistant Professor
University of Washington, Department of Pharmacy*

Dr. Roth is an Assistant Member with the Hutchinson Institute of Cancer Outcomes Research at the Fred Hutchinson Cancer Research Center specializing in comparative effectiveness research (CER) methods, including: observational study design, mathematical modeling, systematic review, and meta-analysis. His research interests involve the application of CER methods to evaluate the benefit-risk tradeoffs and value of pharmaceutical and diagnostic technologies in cancer, with specific focus on pharmacogenomic testing applications, cancer screening strategies, and alternative treatment options in lung, breast, and prostate cancer. Dr. Roth received his MHA from the University of Washington Department of Health Services and a PhD in Pharmaceutical Outcomes Research and Policy from the University of Washington.



SCOTT SHORTENHAUS

*Director, PACE USA, Policy & Advocacy
Lilly Oncology*

Scott is the director of Lilly Oncology's Patient Access to Cancer Care Excellence in the US. In this capacity, he is responsible for developing and implementing a patient-centered public policy agenda for Lilly Oncology. He works with patient advocacy and professional organizations, legislators, think tanks, and other stakeholders on priorities of mutual interest. Before joining Eli Lilly, Scott was most recently the director of the Department of Labor Center for Faith-Based and Community Initiatives. While at the Department of Labor, Scott's primary responsibilities included developing, implementing and overseeing the President's Prisoner Re-Entry Initiative and other prisoner re-entry demonstration projects. Before working at the Department of Labor, Scott worked on the state level for Wisconsin Governor Scott McCallum and on Capitol Hill for Wisconsin Congressmen Mark Neumann and Paul Ryan. Scott is a native of Delavan, Wisconsin, and graduated from Taylor University in Upland, Indiana.





State and Federal
Pharmacy Intelligence Resource



ANNOUNCING

NOW LIVE AT SAFPHIR.COM

AMCP's new law and regulatory resource for our industry.

- Expert policy analysis
- Actionable high-level guidance
- Only relevant news and information
- Customized to your State and Federal priorities

**REQUEST
A DEMO!**

safphir.com

703.684.2625 | info@safphir.com

AM
CP

Academy of
Managed Care
Pharmacy®

Forum Participants

KIMBERLY WESTRICH, MA

*Vice President, Health Services Research
National Pharmaceutical Council*

Kimberly Westrich is the vice president for health services research for the National Pharmaceutical Council. Ms. Westrich has been with NPC since 2000 and is responsible for leading research initiatives on the value of biopharmaceuticals. She has published extensively on issues related to value assessment frameworks, accountable care organizations, clinical pathways, risk-sharing agreements, quality performance measurement, comparative effectiveness research for health care decision-making, and value-based insurance design.

**ANDREW K. YU, PHARMD, BCOP**

*Clinical Programs Coordinator for Oncology
Group Health*

Andrew Yu is the Clinical Programs Coordinator for Oncology at Group Health, an integrated delivery system encompassing an Integrated Delivery Network and Health Plan covering 630,000 patient lives. His focus is on optimizing clinical and patient centered outcomes for Oncology patients, and strategizing and implementing initiatives to promote the practice of value based medicine. Prior to serving in this role, Dr. Yu practiced as an Oncology Clinical Pharmacist for Group Health. He earned his Doctorate of Pharmacy from Washington State University, and enjoys spending his free time adventuring to new areas via motorcycle. Focus: Total Cost of Care, Formulary Management, and Integrated Care Perspective.

**SUSAN ZELT, DRPH, MBA, MPH**

*Senior Director
Takeda Oncology*

Dr. Sue Zelt is a Senior Director of Global Outcome Research at Takeda Oncology and a Health Policy Fellow for the Forum for Collaborative Research. She has experience in applying health economic, health outcome, and health services research to novel therapeutic development. Dr. Zelt served in scientific leadership roles across a number of therapeutic areas including Infectious Disease, Cardiovascular, Rare Diseases, and Dermatology. Dr. Zelt is an Adjunct Assistant Professor at UNC Gillings School of Global Public Health and an ad hoc reviewer for the American Journal of Public Health and Value in Health.



The Educational Resource for Pharmacists, Doctors, Nurses and Other Providers

www.BiosimilarsResourceCenter.org

The New Biosimilars Resource Center, or BRC, is your stop for unbiased, up-to-date information and education on biosimilars.

Designed for pharmacists, physicians, nurses, health plans and other health care stakeholders, BRC content is policy neutral and non-promotional. AMCP, in partnership with American Association of Colleges of Pharmacy, America's Health Insurance Plans, the American Pharmacists Association, the American Society of Consultant Pharmacists, the Hematology/Oncology Pharmacists Association, the National Alliance of State Pharmacy Associations, and the National Community Pharmacists Association, developed the BRC because:

- Biosimilars have the potential to decrease U.S. health care costs and improve access to needed treatments;
- Increased awareness and understanding of biosimilars among health care providers and patients are critical to facilitating their adoption and use in a safe and effective manner; and
- Pharmacists, physicians, and nurses need ready access to information on the latest scientific advances around biosimilars.

The BRC provides the latest, evidence-based educational tools and training materials, including fact sheets, web-based educational seminars, continuing education courses and journal articles. All content is reviewed by independent, scientifically trained experts.

Forum Participants

WRITER – STANTON R. MEHR

President

SM Health Communications, LLC

Stan Mehr has more than 30 years of experience in writing, publishing, and project management, in the health care and managed care arena. Since 2007, his organization, SM Health Communications LLC, has been focused on writing, editing, and presenting on a variety of topics of interest to the health care industry, including Medicare managed care, disease management, formulary decision making, consumer-directed health care, Medicare part D, long-term care financing, health policy, the uninsured, the history of managed care, the medical pipeline, and many clinical issues. For 20 years, he served as Executive Vice President and Editorial Director of Medicom International Inc., and was the founding Editor of *Managed Care Interface* in 1987, the first monthly, peer-reviewed journal for the managed care industry, and its sister publication *Long-Term Care Interface*. Stan earned a degree in Biology from the State University of New York at Stony Brook.

AMCP STAFF

SUSAN A. CANTRELL, RPH, CAE

Chief Executive Officer

Academy of Managed Care Pharmacy

MARY JO CARDEN, RPH, JD

Vice President of Government & Pharmacy Affairs

Academy of Managed Care Pharmacy

EMILY DELAUDER

Project Coordinator, Business Development

Academy of Managed Care Pharmacy

CHARLIE DRAGOVICH, BS PHARM

Senior Director of Business Development & Strategic Alliances

Academy of Managed Care Pharmacy

NEAL LEARNER

Media Relations & Editorial Director

Academy of Managed Care Pharmacy

CHRIS LYONS

Chief Operating Officer

Academy of Managed Care Pharmacy

DANA REGAN, MBA

SVP, Client Services

The Access Group

TERRY RICHARDSON, PHARM.D, BCACP

Director of Product Development

Academy of Managed Care Pharmacy

RUBY SINGH, PHARM.D, BCPS

Vice President, Education & Training

Academy of Managed Care Pharmacy





A series of horizontal lines for writing, spanning the width of the page. There are 20 lines in total, providing ample space for notes or a response.

For oncology products, it's never too early to start.

59% of payers are conducting pipeline research
12-18 months prior to expected product approval.

See how the **AMCP eDossier System**
supports pipeline review for oncology products!

Manufacturers

- Provide digitized oncology product information prior to FDA approval (as per AMCP Format 4.0 guidance) to respond to decision maker requests
- Ensure product value message is available to decision makers for conducting their reviews

Decision Makers

- Include oncology products on their Watch List to outline directly to manufacturers the information they wish to receive and when
- Access over 150,000 links to support research efforts



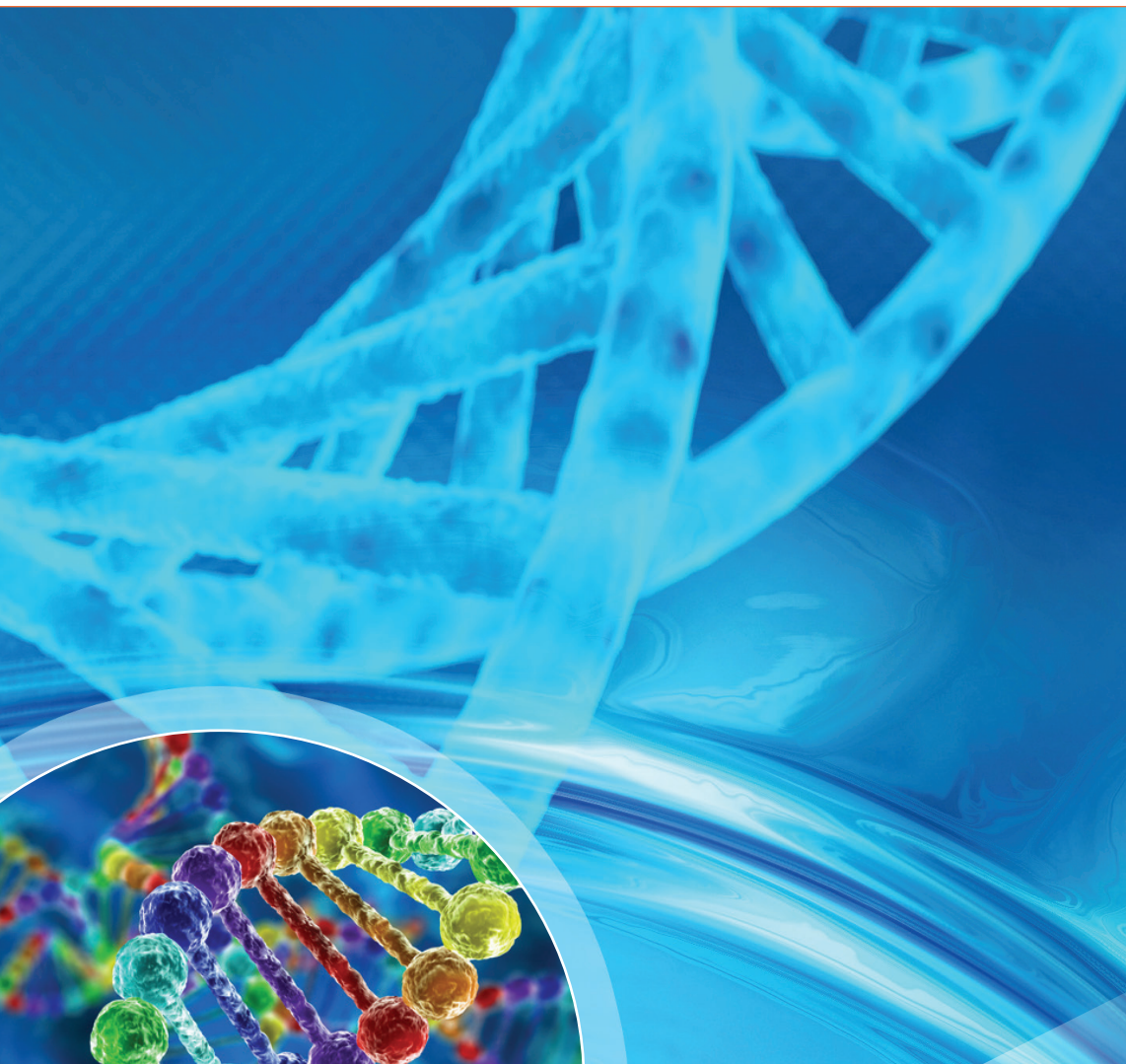
- + Digitized, interactive Dossier information (before or after approval)
can be “indication-focused” for multi-indication agents
— easier for updates, and to review!

For interested health care decision makers who would like more information on using the System,
or Life Sciences companies interested in supporting the System, please contact us at info@edossiers.com.

100 N Pitt Street | Suite 400 | Alexandria, VA 22314
Tel 703/683-8416 | Fax 703/683-8417 | www.amcp.org



Academy of
Managed Care
Pharmacy®



AMCP PARTNERSHIP FORUM •
DULLES, VA • NOVEMBER 15-16, 2016 •

 #AMCPoncology